

# Implementation Experiences of WFD in Sweden

## Poland 17 January 2008

Bo Troedsson

# Swedish WFD organization

Parliament & Government

Laws & Economy  
Environ. Quality Objectives

National - SEPA & SGU

Guidance

Regional – WA 5



Decisions EO & RBMP

Regional - County adm. board 21

Operative, public part.,  
authority

Local - Municipalities 290

Authority - environ. & planning

Water associations, Landowners,  
Water right owners, NGO.....

Civil rights & responsibility



## 5 River basin districts

Competent authorities located at the County Administrative Boards in:

Norrbottnens län

Västernorrlands län

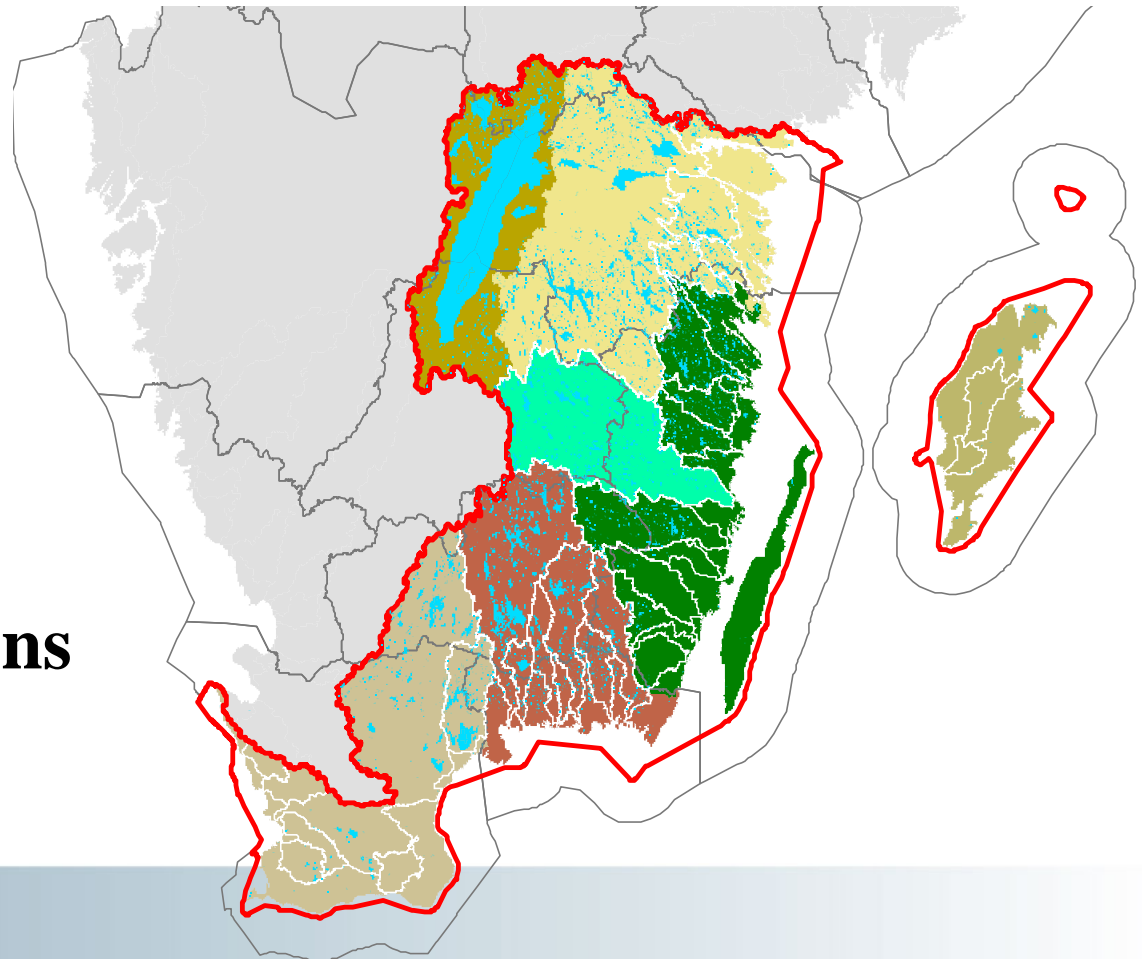
Västmanlands län

Kalmar län

Västra Götalands län

# South Baltic River Basin district

- **10 counties**
- **95 municipalities**
- **2 200 000 inh**
- **30 Major sub-basins**
- **> 4000 lakes**
- **24 water organizations**



# The Competent Authority

- The delegation for the Competent authority, appointed by the government
- The county governor is the Chairman
- Decides the environmental quality standards, plan of measures and the management plan
- Meets about four times a year
- Consists of experts from the counties, municipalities and universities
- One district - one Competent Authority



# Water district and management

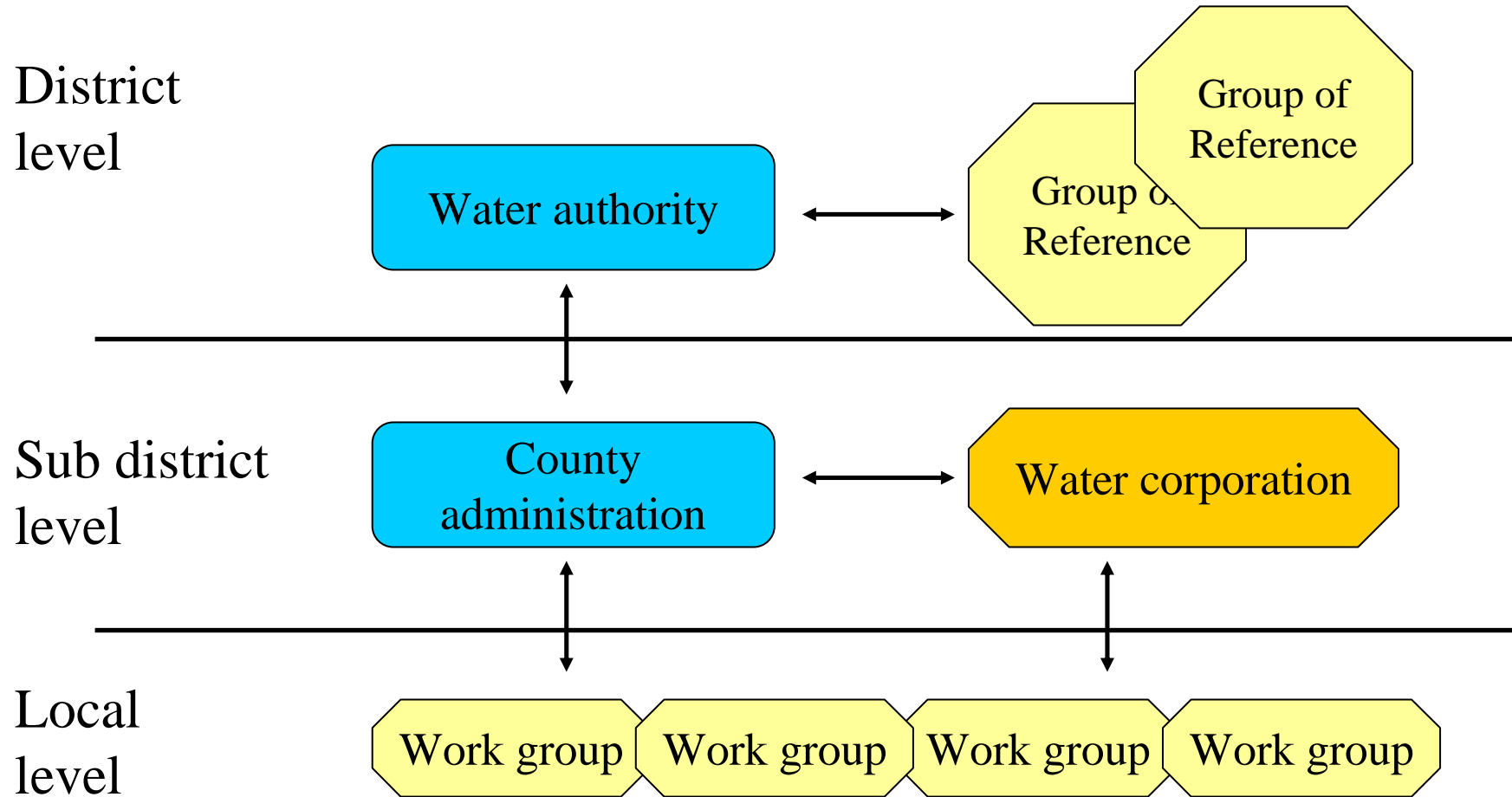
## Competent authority

- Coordinate activities in the district
- Prescribe Environmental Quality Standards, Programme of measures and River Basin Management Plan

## County Administrative Boards

- Responsible for establishment of work-groups within sub-basins,
- Proposals for EQS, PoM, RBMP, monitoring programme, information

# Organisational structure



## Define water bodies

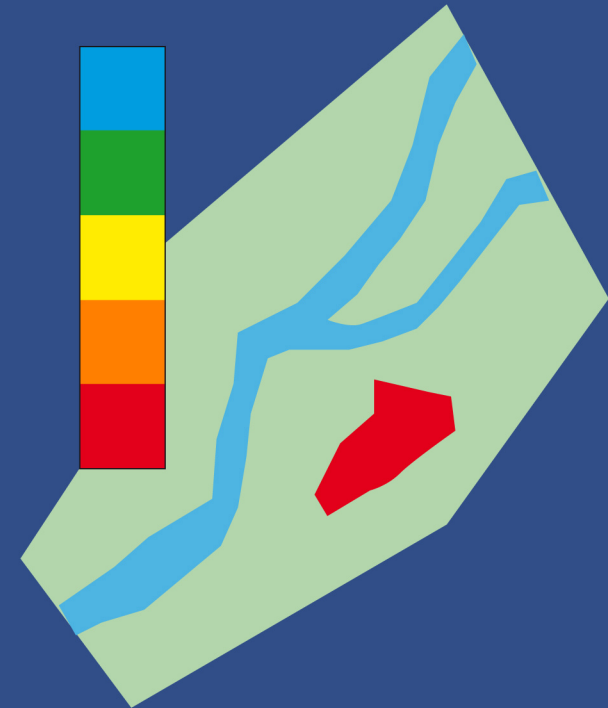
- From "reporting water body" to water body!
- Homogenous and "important"
- Lake  $>1,0 \text{ km}^2$
- River basin  $> 10 \text{ km}^2$
- From 13 000 to about 20 000 water bodies



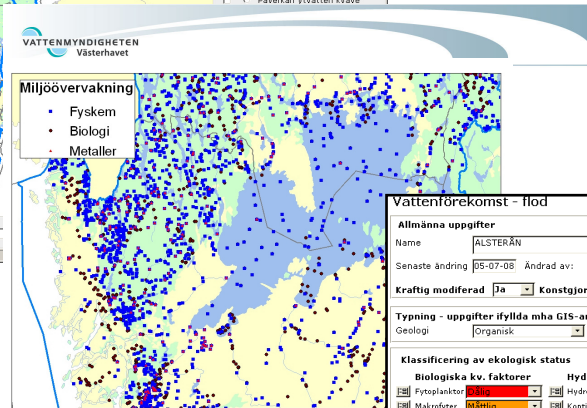
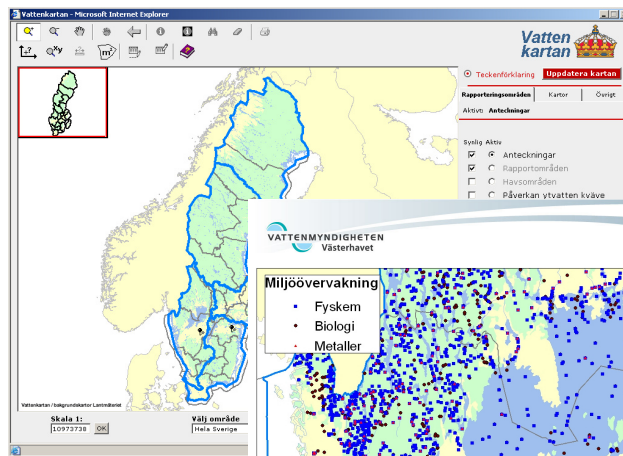


## Status assessment

- All water bodies shall be assessed
- Guiding principles produced by the Swedish EPA
- Finished during 2007
- The county administrations assess the waters based on measurements.
- Expert judgements are important since measurements are insufficient or not available.
- The assessments are stored in the database WISS ([www.viss.lst.se](http://www.viss.lst.se) )



# ...pilot project, characterization database, water map, meta database.....



**Vattenförekomst - flod**

Allmänna uppgifter  
 Name: ALSTERÅN EU ID: 54631065-153030 REGION\_CD: 14  
 Senaste ändring: 05-07-08 Ändrad av: SE\_d\_nho Svenskt ID: 631065-153030 BASIN\_CD:  
 Kraftigt modifierad: Ja Konstgjord: Nej Rapporteringsförekomst:

Typning - uppgifter ifyllda mha GIS-analys men är modifierbara  
 Geologi: Organisk Tillränningsområde: [Liten: 10-100km<sup>2</sup>] Höjd över havet: [8g]

**Klassificering av ekologisk status**

Biologiska kv. faktorer	Hydromorfologiska kv. faktorer	Fysikalisk-kemiska kv. faktorer
Fytoplankton: <b>Dålig</b>	Hydrologisk regim: <b>Bäst</b>	Allmänna förh.: <b>Mätning</b>
Makrofytter: <b>Måttlig</b>	Kontinuitet: <b>God</b>	Syret. ämnen: <b>Mätning</b>
Bestäcks Ev.: <b>God</b>	Morf. förh.: <b>God</b>	Icke-Syret. ämnen: <b>Mätning</b>
Fiskfauna: <b>Dålig</b>		Övergödning: <b>Mätning</b>
		Försurning: <b>God</b>

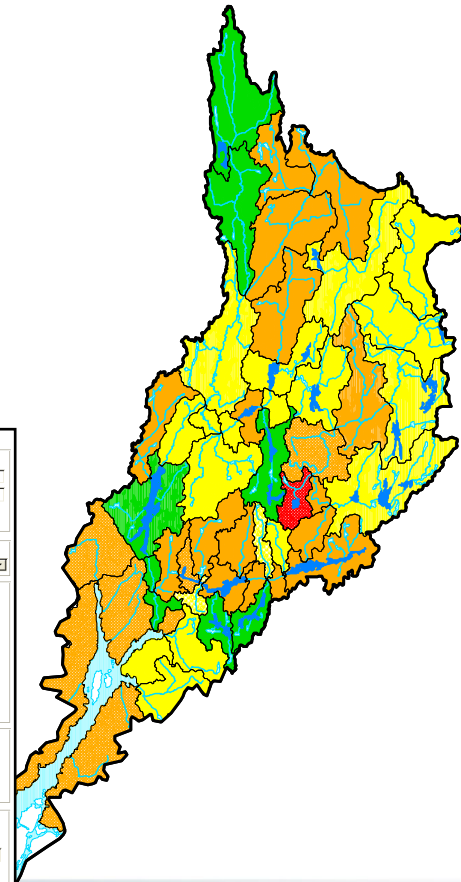
Aktuella parameter: SE\_CD\_FECL 4

**Påverkan**

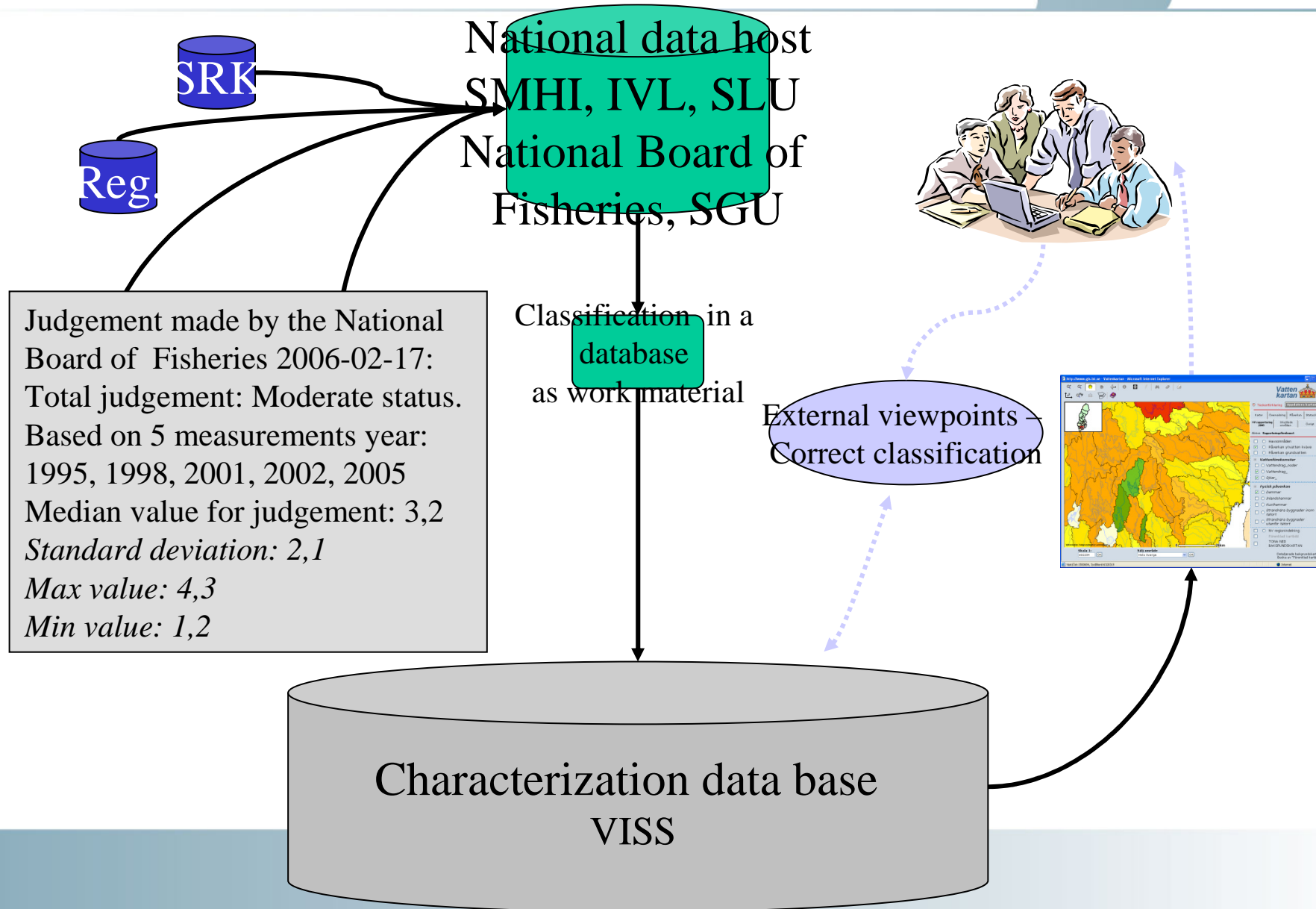
Punktsällor: <b>Osäker påverkan</b>	Flödesregleringar: <b>Betydligt betydande</b>	Övrig mänsklig påv.: <b>Osäker påverkan</b>
Diffusa källor: <b>Betydligt betydande</b>	Morförändringar: <b>Betydligt betydande</b>	EU_CD: 15631065-153030
Vattenuttag: <b>Betydligt betydande</b>	Markanvändning: <b>Osäker påverkan</b>	

**Total påverkan och status**  
 Påverkanbedömning totalt: **Betydligt betydande påverkan - Operativ övervakning och åtgärder**

Ekologisk status: **El Massad** NDN\_COMP: **El Massad** EU\_CD: 6311065-153030  
 Ekologisk potential: **El Massad** Fys-kemisk status: **Färdig** SE\_CD\_SWGT:

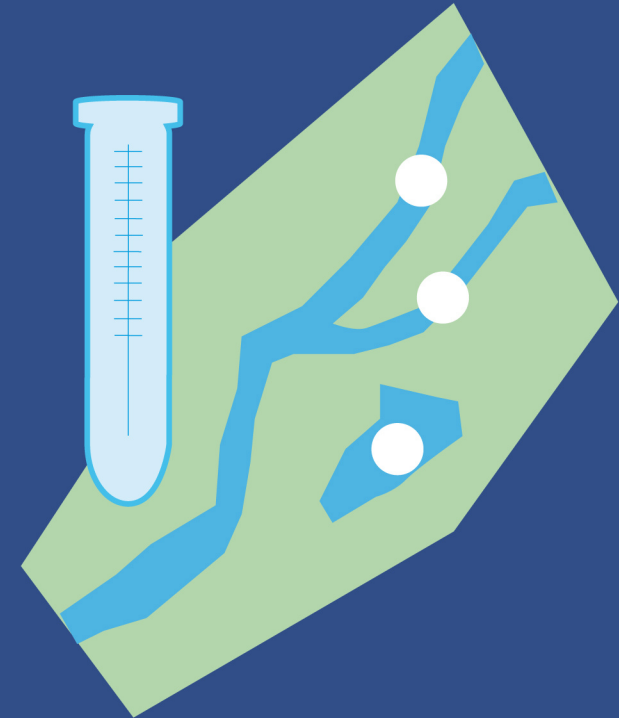


# Ecologic status classification

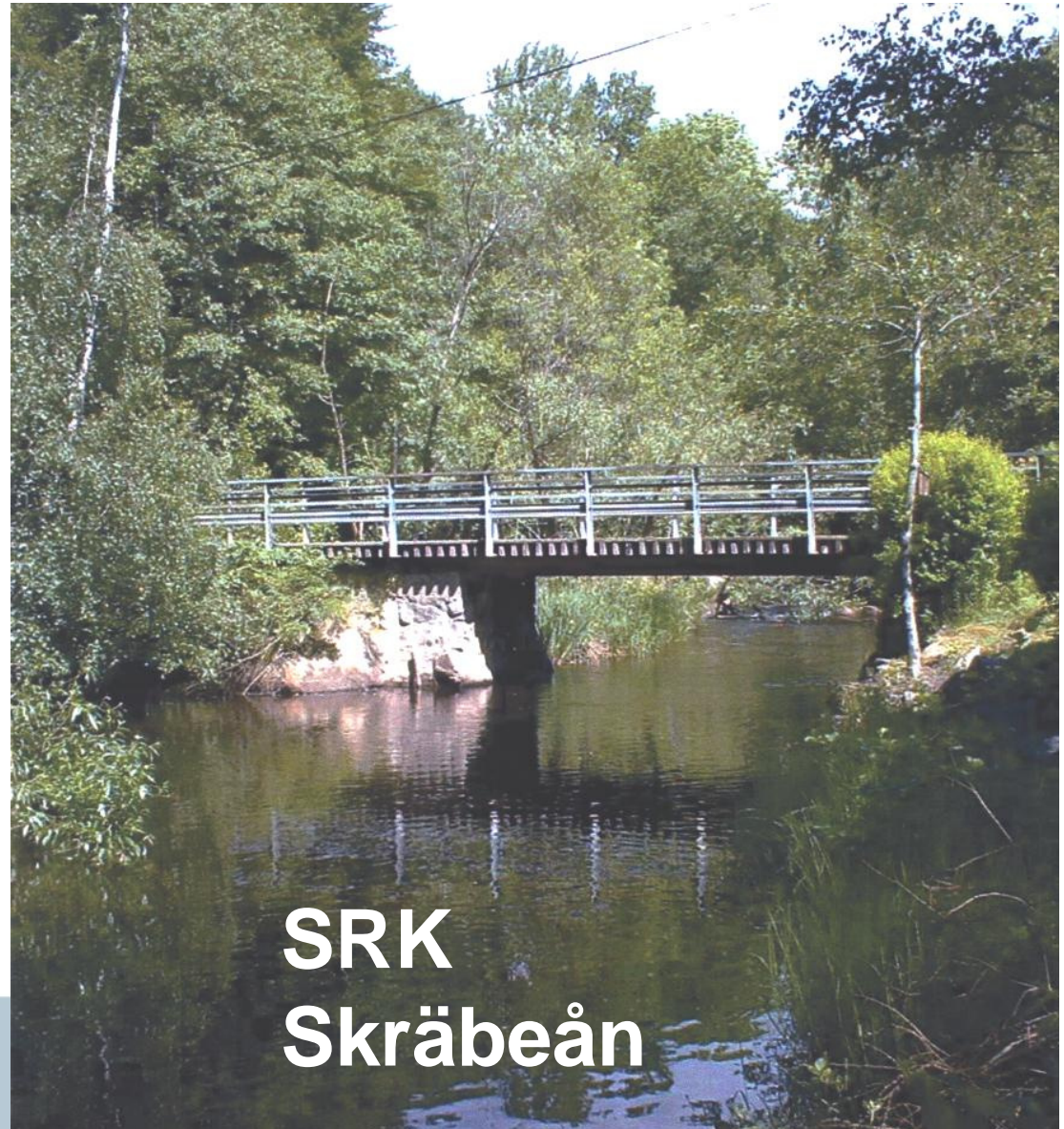
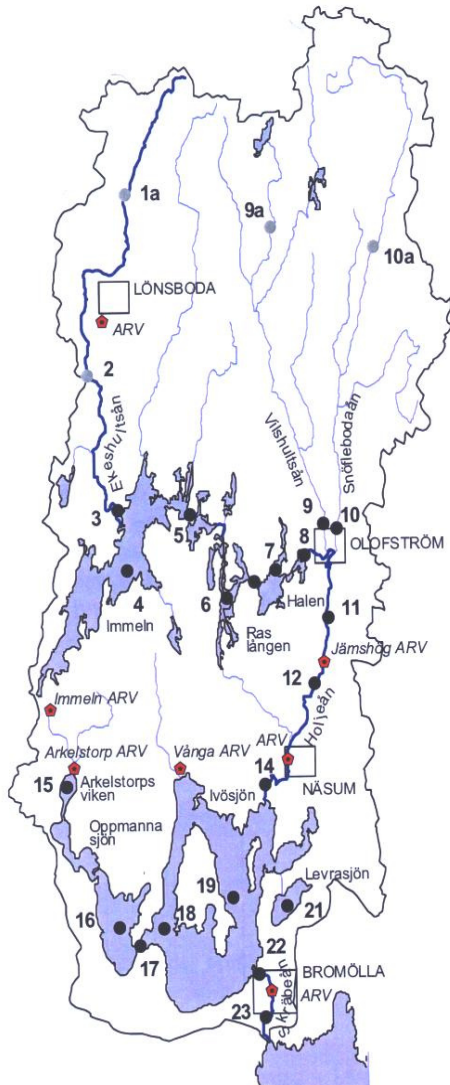


# Monitoring programmes

- All Swedish monitoring stations and monitoring programmes in water are now available in ONE database – WISS.
- Data is collected from county administrative boards, municipalities, river basin organisations, national institutions and others.
- A review to the monitoring programmes according to WFD must be done by 2009

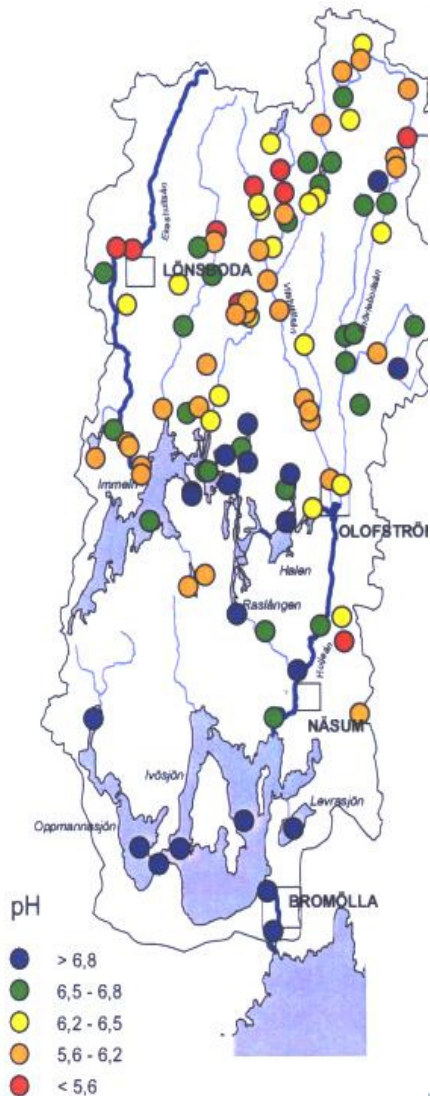


# Coordinated recipient control



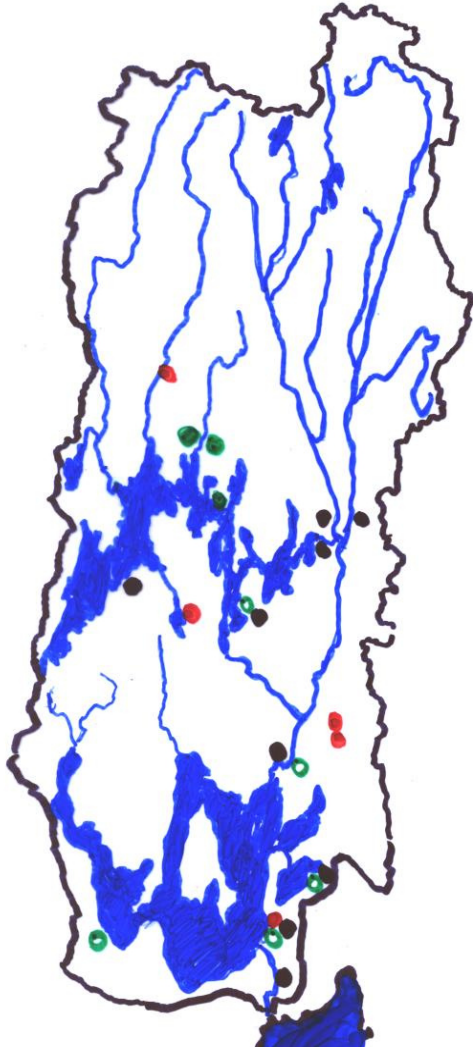
SRK  
Skräbeån

# Operative supervision



- Effect follow up liming
- Coordinated recipient control

# Controlling supervision

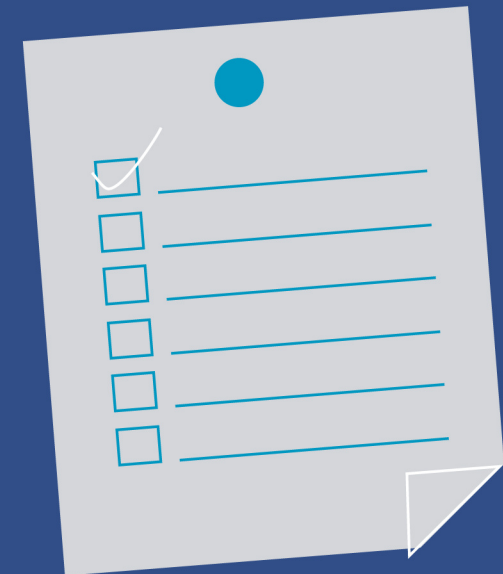


National environment supervision - all  
Regional environment supervision – part  
Local environment supervision - part



## Plan of measures

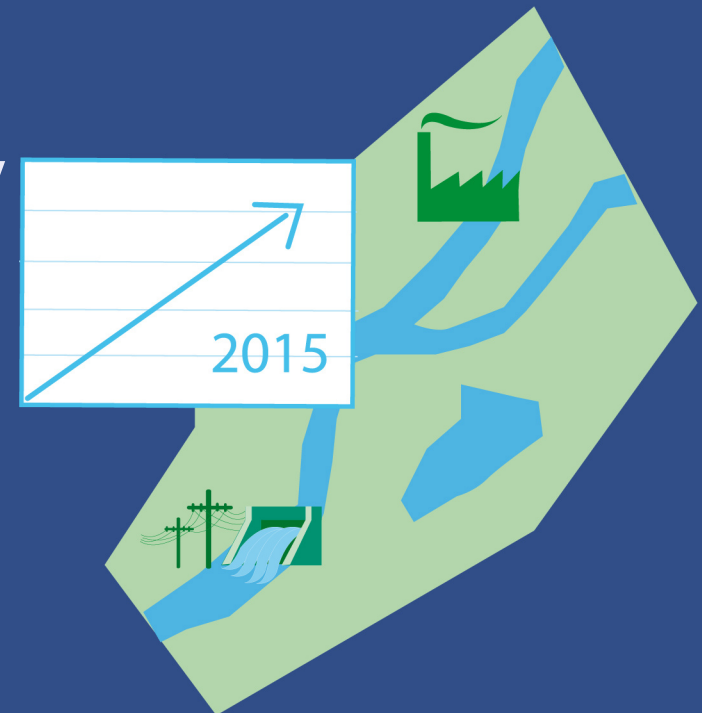
- The geographical coverage is the whole district or for a drainage basin or even a part of a drainage basin.
- Contains for example demands on water protection areas, non cultivated field zones, changes of conditions for industries
- Environmental and socio-economic consequence analysis is demanded in the programme.
- The counties propose, the delegation decides
- Other authorities enforces the decisions



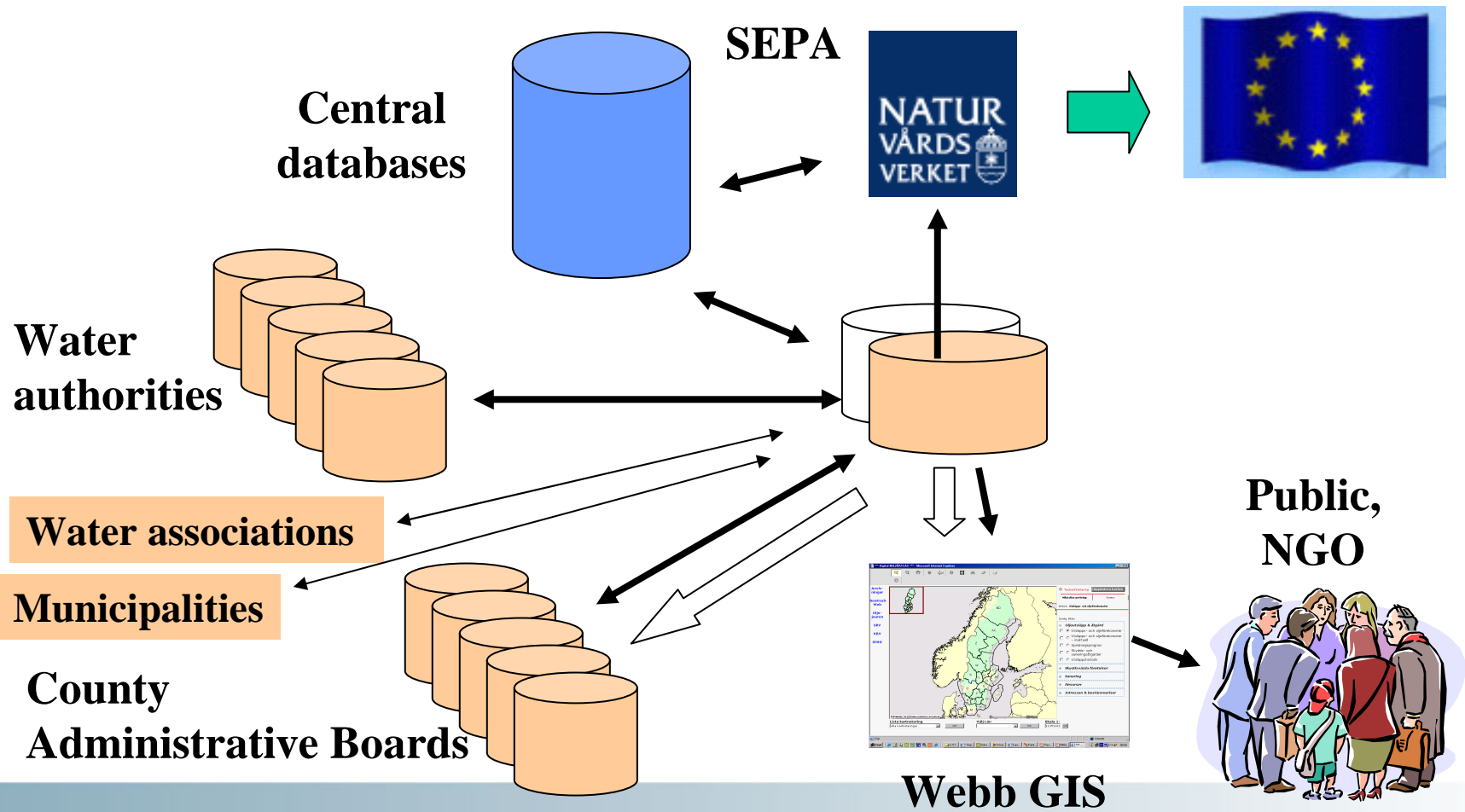


# Pressure analysis

- To propose measures we need to know the anthropogenic pressure now and in the future
- Survey the society's need of water and anthropogenic pressure on the water quality
- The pressure analysis will be available in WISS
- Stakeholders from industries, agriculture, forestry and NGOs are important partners in these analysis

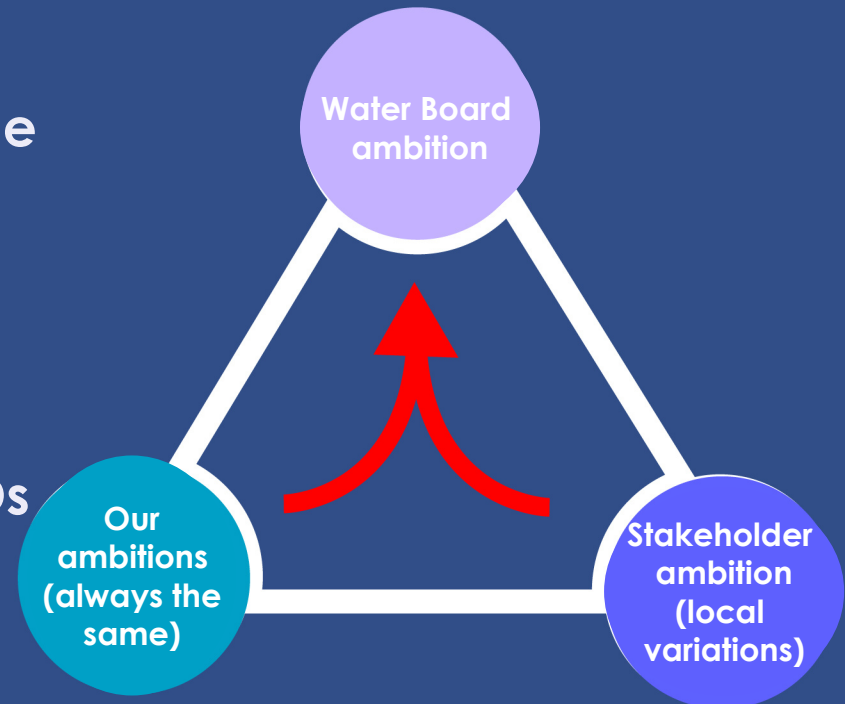


# Public Participation

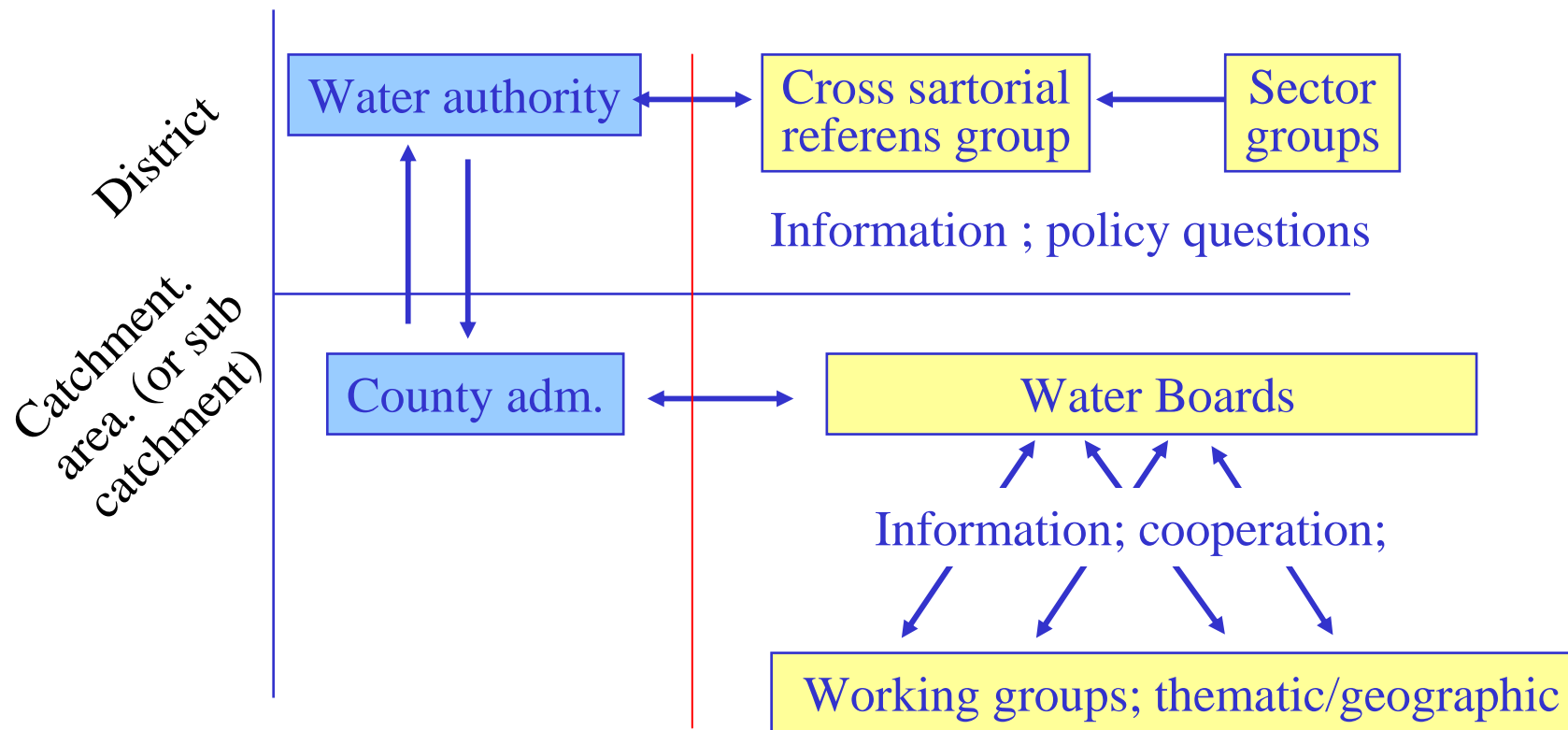


# Public participation

- WFD crystal clear – WE must make the stakeholders and public willing to participate
- This demands cooperation
  - Water Boards
- Water Boards lets stakeholders, NGOs and authorities sit around the same table discussing the common water issues
- Water boards are advisory – decisions are not mandatory



## Level of cooperation – District / regional / local



# WATER BOARD

- Over all perspective on water resources
- Actors and authorities learn from each other
- Correct measures on the right place
- Better local anchoring before decision
- Possibility to influence before decision making

## Tools for participation

- Water Information System Sweden
- Database storing assessments, no data
- Collects information from different databases
- Available through internet to everybody
- Same interface for officers, stake holders and public
- Our most important cooperation tool
- The Water Map – an internet map server with a more graphical interface towards the same data



**WISS**

Water Information  
System Sweden

---

**WATER MAP**

## Who should pay?

- Many measures all ready started: aquatic liming, decontamination of soils, restoration, recreating wetlands
- According to WFD – Polluter Pays Principle – but...
- Who is the Polluter?
- 2010 should a pricing policy be available – the government responsible



## Web links

- The Water Authorities: [www.vattenmyndigheterna.se](http://www.vattenmyndigheterna.se)
- The Water Map: [www.gis.lst.se/vattenkartan](http://www.gis.lst.se/vattenkartan)
- WISS: [www.viss.lst.se](http://www.viss.lst.se)



**Thanks for your attention!**

**Bo Troedsson**

**[bo.troedsson@vetlanda.se](mailto:bo.troedsson@vetlanda.se)**